

Courses & Distances
Down Juniata

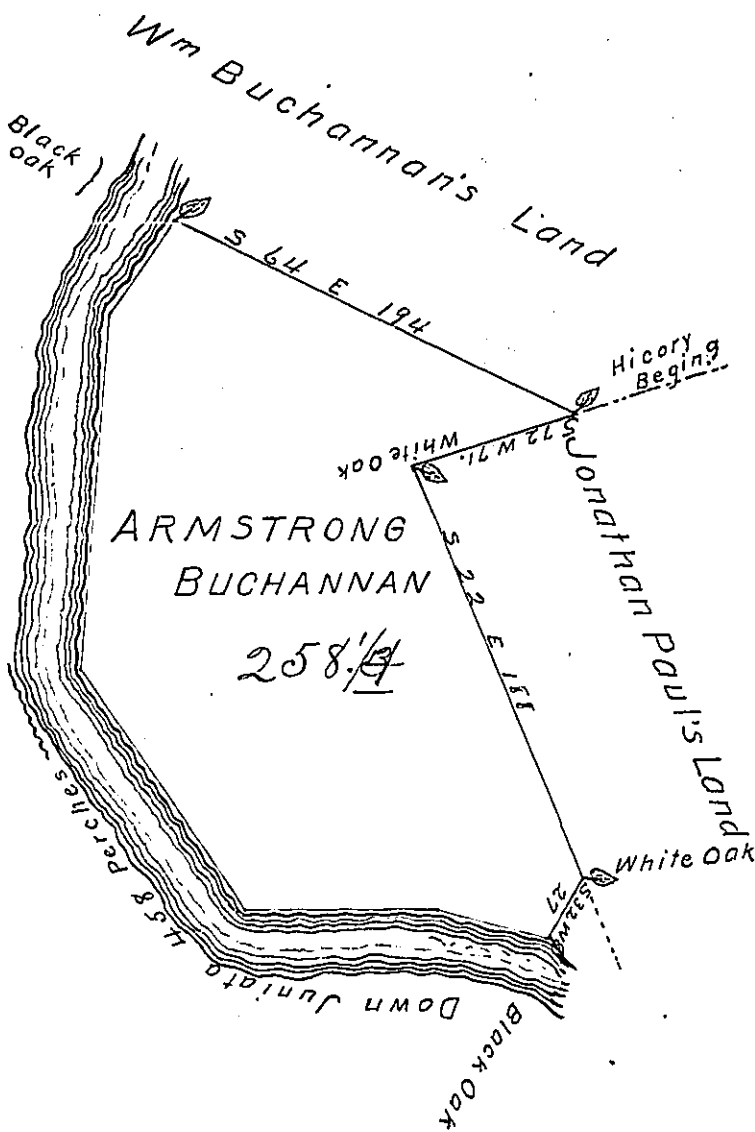
N 77 W 48

West 85

N 35 W 125

N 5 E 152

N 35 E $\frac{45}{458}$



The draught of a tract of land called _____
 situate on the south side of Juniata opposite to
 Fort Granville in the County of Cumberland, conta-
 ining Two hundred fifty Eight Acres 52 Perches with
 the usual Allowance of Six Acres & Cent. for Roads
 surveyed the 17th day of April anno Dom: 1766.
 In Pursuance of a Warrant from the Honible Pro-
 prietaries to Armstrong Buchannan bearing date at
 Philad^a the 5th day of July anno Dom: 1762.

To John Lukens Esq JG } P Wm Maclay
 of Pennsylvania }

IN TESTIMONY that the above is a copy of the original remaining on file in
 the Department of Internal Affairs of Pennsylvania, made
 conformably to an Act of Assembly approved the 16th day of
 February, 1833, I have hereunto set my Hand and caused
 the Seal of said Department to be affixed at Harrisburg,
 this twelfth day of October 1903

James D. Brown
 Secretary of Internal Affairs.